



FIRE-RATED DOORS

FOR RESIDENTIAL & LIGHT COMMERCIAL USE





Do you need a Fire-Rated Door?

When considering a fire door, it is crucial to determine if the door is for a Light Commercial or Residential application. Both applications require different doors, and it is vital to choose the correct one for your needs. The products in this catalog are best for multi-family homes, condominiums, apartment buildings, and homes that need a fire-rated entry based on local building codes.

NOTE: It is essential to review and verify the appropriate building codes in your area. Laws and regulations vary widely between states, cities, townships, and municipalities. Always check with all regulating authorities to ensure the door unit you order and install complies with all applicable laws.

Table of Contents

90-Minute vs. 20-Minute Units	3
90-Minute Fire-Rated Steel Edge Doors.....	4
20-Minute Fire-Rated Wood Edge Doors	6
RSP 90-Minute Split Steel Frames	8
RSP 90-Minute Hardware	8
Therma-Tru® 20-Minute Frames	9
Therma-Tru® 20-Minute Hardware.....	9
Neutral and Positive Pressure.....	10
Reinforced Doors	10
Rough Openings	11
Educational Tools & Guided Selling.....	11

True Commercial Doors

Commercial doors are best suited for doctor's offices, banks, and small office buildings. Made of hollow metal, they can have a 90-minute rating. Check out our in-stock Commercial catalog to learn more at reeb.com/catalogs.



90-Minute vs. 20-Minute Units

Choosing a door's rating is important, but the unit's rating is dependent on all the components used. The lowest rated item in the entire unit determines the rating. For example, a 90-minute rated door placed in a 20-minute rated frame has a 20-minute rating.

90-Minute Units

A 90-minute unit is created with a steel-edge door and split steel frame. The Reeb® Specialty Products steel-edge doors have an entire steel edge creating a sturdier steel door. These doors are insulated with a polyurethane core and tested to withstand at least 90 minutes of fire exposure. The RSP split steel frame accompanies this door to create a 90-minute unit.



20-Minute Units

There are a few ways to create a 20-minute unit. The RSP steel-edge doors can pair with a 20-minute wood or composite frame. The same 20-minute frame can pair with wood-edge doors. The Therma-Tru® wood-edge doors have a polyurethane core for insulation. These fiberglass and steel doors were tested to withstand at least 20-minutes of fire exposure. The 20-minute Therma-Tru® doors can also pair with the 90-minute RSP split steel frame for easy installation based on the application need.



Every door needs a lock to keep it closed. Commercial hardware, such as the Hager locksets found in our Commercial Catalog, can also be used on our Residential Fire Doors.





Our Reeb® Specialty Products (RSP) brand offers high quality products with big savings. The quality of the products provided under the RSP brand are competitive with other major brands within our industry.

Reeb® Specialty Products – providing value pricing on quality products.

90-Minute Fire-Rated Steel Edge

Reeb® Specialty Products | 24 Gauge



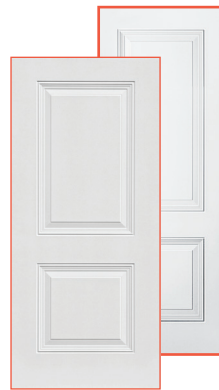
RF1*

2/6	6/8		
2/8	6/8	7/0	
2/10	6/8		
3/0	6/8	7/0	8/0



RF11*

2/8	6/8
3/0	6/8



RF24*

2/8	6/8		
2/10	6/8		
3/0	6/8	7/0	8/0



RF24* (ADA)

2/10	6/8
3/0	6/8



RF29*

2/8	6/8
2/10	6/8
3/0	6/8



RF26*

2/8	6/8
2/10	6/8
3/0	6/8



RF31*

2/8	6/8
3/0	6/8



RF52*

2/8	6/8
2/10	6/8
3/0	6/8



RF55*

2/8	6/8	
3/0	6/8	7/0



RF60*

2/6	6/8		
2/8	6/8	7/0	
2/10	6/8		
3/0	6/8	7/0	8/0

90-Minute Fire-Rated Steel Edge

Reeb® Specialty Products | 22 Gauge

SHAKER



RF11S*

2/8	6/8	7/0	
2/10	6/8	7/0	
3/0	6/8	7/0	8/0

SHAKER



RF24S*

2/8	6/8	7/0	
2/10	6/8	7/0	
3/0	6/8	7/0	8/0

SHAKER



RF24S* (ADA)

3/0	6/8
-----	-----

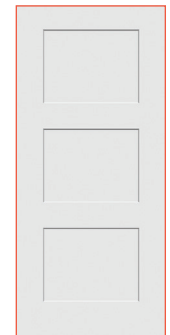
SHAKER



RF31S*

2/8	6/8	7/0
2/10	6/8	7/0
3/0	6/8	7/0

SHAKER

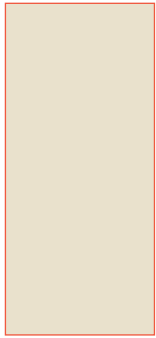


RF33S*

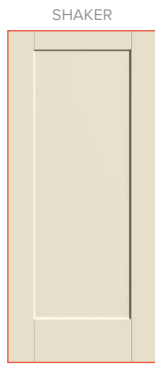
2/8	6/8	7/0
3/0	6/8	7/0

* This door does not have stile lines.

Smooth-Star® Collection

**SSF100***

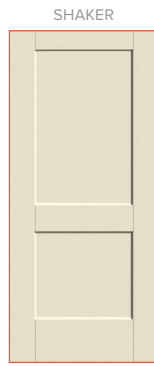
2/8	6/8
3/0	6/8



SHAKER

SSF1100

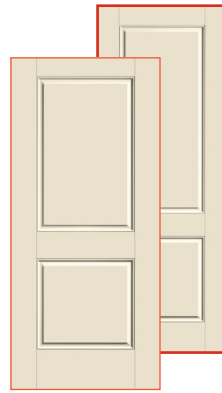
2/6	6/8
3/0	6/8



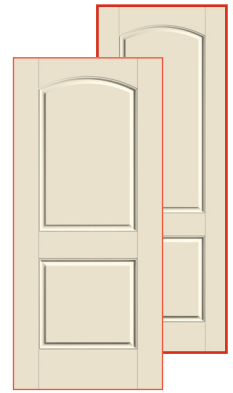
SHAKER

SSF120

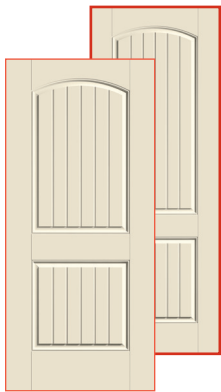
2/8	6/8
3/0	6/8

**SSF220**

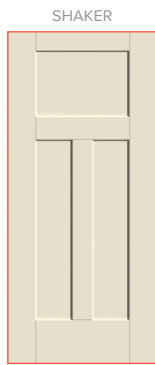
2/8	6/8	8/0
3/0	6/8	8/0

**SSF8220**

2/6N	6/8	
2/8	6/8	8/0
3/0	6/8	8/0

SSF200**SSF8200****SSF205**

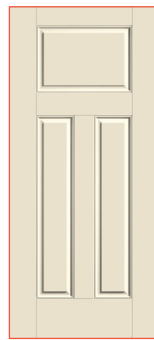
2/8	6/8	8/0
3/0	6/8	8/0



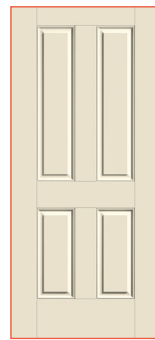
SHAKER

SSF4800

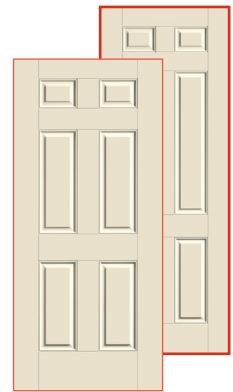
2/8	6/8
3/0	6/8

**SSF600**

2/8	6/8
3/0	6/8

**SSF960**

2/8	6/8
3/0	6/8

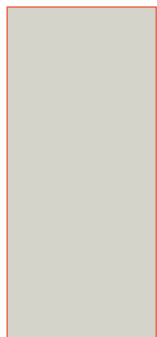
**SSF160**

2/6N	6/8	
2/8	6/8	7/0
3/0	6/8	7/0

SSF8160

		8/0
		8/0

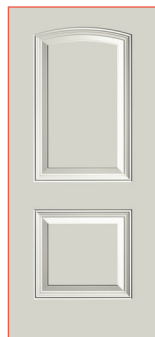
Profiles Steel™

**100***

2/0	6/8	
2/4	6/8	
2/6	6/8	7/0
2/8	6/8	7/0
2/10	6/8	
3/0	6/8	7/0

**978HD***

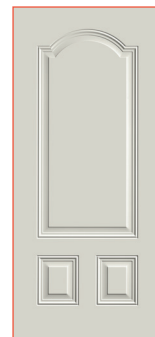
2/8	6/8
3/0	6/8

**1005HD***

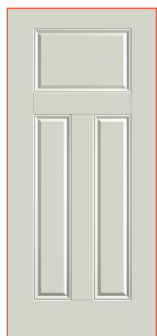
2/8	6/8
3/0	6/8

**205HD***

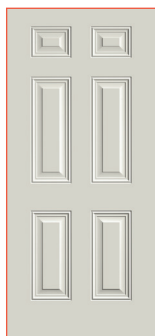
2/8	6/8
3/0	6/8

**969HD***

2/8	6/8
3/0	6/8

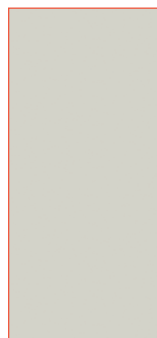
**203HD***

2/8	6/8
2/10	6/8
3/0	6/8

**210HD***

2/6N	6/8	
2/8	6/8	7/0
2/10	6/8	
3/0	6/8	7/0

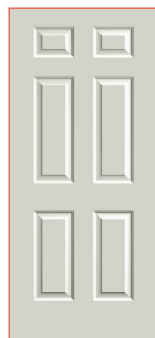
Traditions Steel™

**TS100***

2/0	6/8
2/4	6/8
2/6	6/8
2/8	6/8
3/0	6/8

**TS214***

2/8	6/8
3/0	6/8

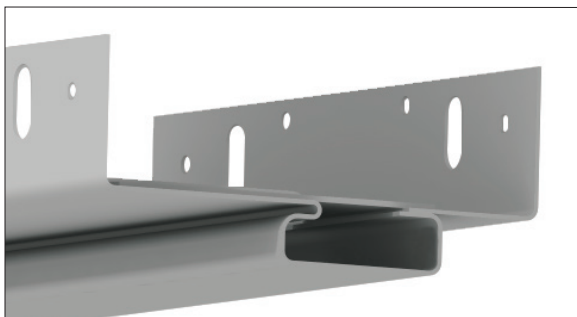
**TS210***

2/6N	6/8
2/8	6/8
2/10	6/8
3/0	6/8

* This door does not have stile lines.

Reeb® Specialty Products

90-Minute Split Frames & Hardware



- Manufactured of galvanized steel
- Kerfed to accept weatherstrip
- 18-gauge base frame
- 18-gauge closure package
- 4" hinge with 5/8" radius
- Standard 4-7/8" ANSI strike prep with 2-1/4" full-lip strike adaptor
- 2-3/4" x 1-1/8" Deadbolt Strike Prep
- Also available for a mortise lock application for single bore

Door Viewers

Available Finishes: US3, US5, US15, US26D, US10B
Also available for Flat Panel Shaker Doors: US15, US10B
See Page 9 for hardware finishes



Sill Options



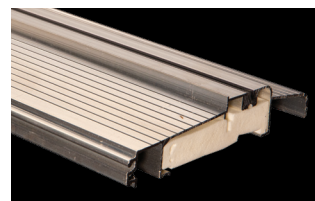
Fixed Sill



Adjustable Sill

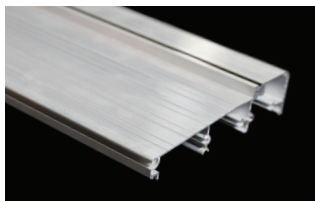


ADA Sill



Outswing Sill

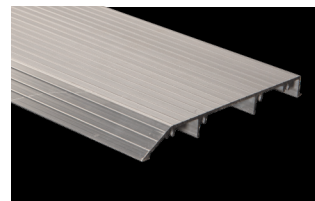
The option to have No Sill is also available in limited sizes.



Aluminum Thermal Break Fixed Sill



Thermal Break ADA



Tile-Back Sill

Jamb Depth for Standard Sill

6/8 Door	7/0 Door	8/0 Door
4-1/2"-5-1/2"	4-1/2"-5-1/2"	4-1/2"-5-1/2"
5-1/2"-6-1/2"	5-1/2"-6-1/2"	5-1/2"-6-1/2"
6-1/2"-7-1/2"	6-1/2"-7-1/2"	6-1/2"-7-1/2"
7-1/2"-8-1/2"	7-1/2"-8-1/2"	7-1/2"-8-1/2"

Jamb Depth for Public Access Sill

6/8 Door	7/0 Door	8/0 Door
4-1/2"-5-1/2"	4-1/2"-5-1/2"	4-1/2"-5-1/2"
5-1/2"-6-1/2"	5-1/2"-6-1/2"	5-1/2"-6-1/2"
6-1/2"-7-1/2"	6-1/2"-7-1/2"	6-1/2"-7-1/2"
7-1/2"-8-1/2"	7-1/2"-8-1/2"	7-1/2"-8-1/2"

Jamb Depth for Public Access Thermal Break Sill

6/8 Door
4-1/2"-5-1/2"
5-1/2"-6-1/2"

Jamb Depth for No Sill

6/8 Door
4-1/2"-5-1/2"
5-1/2"-6-1/2"
6-1/2"-7-1/2"

Hinges 4"x4" with 5/8" Radius

Available Finishes: US1D, US2D, US3, US5, US15, US26D, US10B
See Page 9 for hardware finishes



Self-Closing



Ball-Bearing



Ball-Bearing NRP

Therma-Tru®

20-Minute Frames & Hardware

20-minute frames pair well with 20-minute doors to create a 20-minute rated unit. These frames can also be used with the RSP 90-minute doors, but the result will be a 20-minute rated unit.

Frame Options



Primed



Solid Clear Pine



FrameSaver



On-Guard Primed



On-Guard Grained

Inswing Sill Options



Hardwood Adjustable Sill



Composite Adjustable Sill



Public Access w/ Thermal Break

Door Viewers

Available Finishes: US3, US5, US10B, US15, US26D



Hinges 4"x4" with Square x 5/8" Radius

Available Finishes: US1D, US3, US2D, US10B, US15, US26D



Ball-Bearing Square/Radius

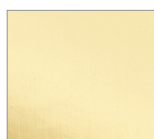


Self-Closing Square/Radius

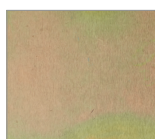
Hardware Finishes



US1D
Flat Black



US3
Bright Brass



US2D
Zinc Dichromate



US5
Antique Brass



US15
Satin Nickel



US26D
Satin Chrome



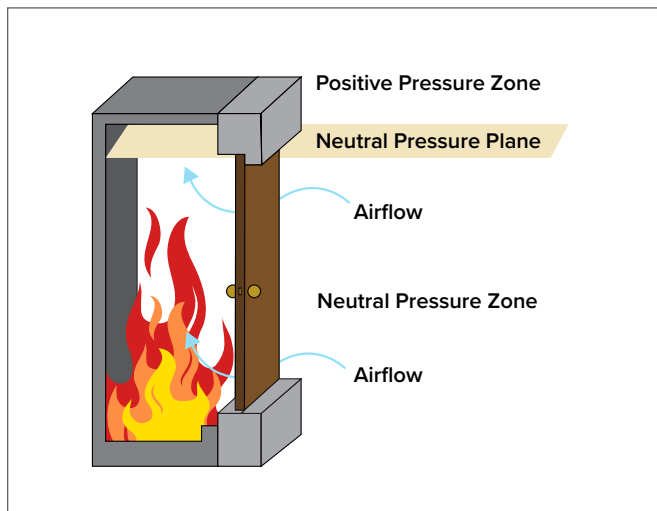
US10B
Oil Rubbed Bronze

Neutral and Positive Pressure

The Underwriters Laboratory (UL) and Warnock Hersey (Intertek Testing Services) are the entities that test and rate all fire doors. To properly rate the door, it must be tested as a complete unit with hardware and installed on a wall with a test environment behind it. The primary purpose of the test is to ensure the door can contain the spread of the fire.

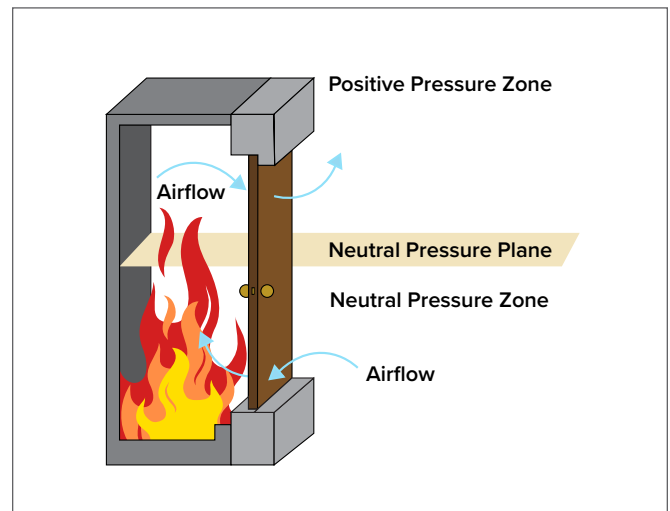
Neutral Pressure

Neutral pressure assumes the pressure plane to be above the top of the door, and the pressure will not build up in the room containing the fire. Air flows into the room at the bottom and top of the door preventing flames from spreading. A weatherstrip helps to eliminate the smoke leaving the room.



Positive Pressure

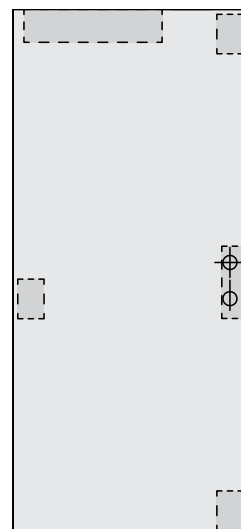
Positive pressure assumes the pressure plane is 40" from the bottom of the door. A neutral pressure area is below the pressure plane, and a positive pressure area is above the plane. Air flows into the room at the bottom but flows out at the top. Along with the circulating air, dangerous gases or flames may also escape causing the door's face to burn.



Reinforced Doors

Steel-edge doors with a bore may also need a door closer, while doors with no bore will need panic hardware.

Additional reinforcements are necessary to ensure the door will stand up to continual usage. A reinforced door includes additional material on the back of the door skin for extra protection.



Door is Reinforced for a Closer and Panic Hardware

Rough Openings

Reeb® Specialty Products

Series Fire Doors

Rough openings vary depending on the sill type and the door width. Sill options include a standard sill, no sill, and a public access (ADA) sill for both inswing and outswing units. Ensure the closure package jamb depth and sill application match what is needed in the field. Below are the minimum drywall rough openings. For 7' doors, add 4" to the height dimensions and for 8' doors, add 16" to the height dimension.

Size	Standard Sill	No Sill	ADA Sill
2668	31-1/4" X 81-3/4"	31-1/4" X 80-1/2"	N/A
2868	33-1/4" X 81-3/4"	33-1/4" X 80-1/2"	33-1/4" X 81"
21068	35-1/4" X 81-3/4"	35-1/4" X 80-1/2"	35-1/4" X 81"
3068	37-1/4" X 81-3/4"	37-1/4" X 80-1/2"	37-1/4" X 81"

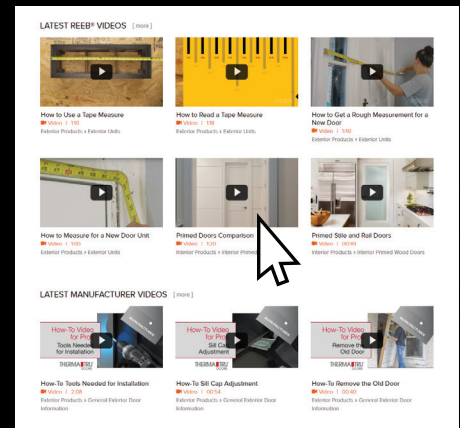


REEB®
LEARNING CENTER

A learning center for everything door related.

Visit the Reeb® Learning Center for education on choosing the proper door unit, new products, and what product options are available.

Visit the Reeb Learning Center at learn.reeb.com.



Online Residential Fire Catalog


For an interactive format of this catalog, please visit reeb.com/catalogs




Reeb® Warranty Information


View product warranties visit reeb.com/warranties

 **Bethlehem, PA**
1000 Maloney Cir.
Bethlehem, PA 18015
(800) 862-8622 voice
(800) 772-7332 fax

 **Barclay, MD**
1315 Goldsboro Rd.
Barclay, MD 21607
(800) 825-8331 voice
(800) 331-9387 fax

 **Mocksville, NC**
346 Bethel Church Rd.
Mocksville, NC 27028
(800) 642-0886 voice
(800) 618-0620 fax

 **Providence, RI**
19 Business Park Dr.
Smithfield, RI 02917
(800) 343-5703 voice
(800) 388-5979 fax

 **Syracuse, NY**
7475 Henry Clay Blvd.
Liverpool, NY 13088
(800) 422-5224 voice
(800) 531-7332 fax



an **S B P** brand

PART# REEBRESFIRE24

VERSION 1.0.0